

PRO 
Green EXPO
Colorado Convention Center

Denver, CO | February 5 – 8

Plant This, Not That: A Guide to
Gardening with CO Native Plants

Deryn Davidson, CSU Extension

What is a native plant??

- “species that occur naturally in a particular region, state, ecosystem, and habitat without direct or indirect human actions”
 - CONPS, Federal Native Plant Conservation Committee
- “species that has been in place since the advent of European Colonists in North America”

Why native?

Working with/for nature uses fewer resources

- Adapted to our soils and climate
- Up to 60% of municipal fresh water used by households in western U.S. is used for landscape
- Still use water, but potentially less
- Design to use less potable water

Promote/provide pollinator habitat

- If you build it, they WILL come



Chamerion angustifolium, fireweed

Plant Types

- Trees
- Shrubs
- Perennials
- Grasses



Trees



Instead of Callery Pear...

Pyrus calleryana



Serviceberry (*Amelanchier alnifolia*)

- White spring blooms
- Smooth, dark bark
- Edible fruit



Instead of Paper Birch...

Betula papyrifera



Aspen (*Populus tremuloides*)

- Similar white bark
- Native to 7-11.5K'
- Some pest problems



Instead of Russian Olive...

*Elaeagnus
angustifolia*



Silver Buffaloberry (*Shepherdia argentea*)

- Silvery foliage



Instead of Russian Olive...

*Elaeagnus
angustifolia*



Silver Buffaloberry (*Shepherdia argentea*)

- Silvery foliage
- Red berries
- Thorns



Instead of Silver Maple...

Acer saccharinum



Bigtooth Maple (*Acer grandidentatum*)

- Beautiful maple leaf shape
- Chlorosis not an issue
- Fall color
- Branches



Instead of Cockspur Hawthorn...

Crataegus crus-galli

Common Hoptree (*Ptelea trifoliata*)

- Small tree
- Glossy leaf



Instead of Cockspur Hawthorn...

Crataegus crus-galli



Common Hoptree (*Ptelea trifoliata*)

- Small tree
- Glossy leaf



Instead of Cranberrybush Viburnum...

Viburnum opulus



Chokecherry (*Prunus virginiana*)

- White spring bloom
- Persistent fruit
- Tolerates shade



Instead of Smokebush...

Cotinus coggygria



Gambel Oak (*Quercus gambelii*)

- Tolerates some shade
- Multi- or single stem
- A must for bird lovers



Shrubs



Instead of Russian Sage...

Perovskia atriplicifolia



Leadplant (*Amorpha canescens*)

- Purple blooms in summer
- Upright
- Legume
- Bees



Instead of a Lilac...

Syringa vulgaris



Rockspirea (*Holodiscus dumosus*)

- White panicle bloom
- Seedheads
- Part shade
- Xeric



Instead of Wintercreeper...

Euonymus fortunei



Grape Holly (*Mahonia repens*)

- Evergreen foliage
- Creeping growth habit
- Fruit



Instead of Barberry...

Berberis thunbergii



Three-leaf Sumac (*Rhus trilobata*)

- Low, dense growth
- Ornamental fruit



Instead of Barberry...

Berberis thunbergii



Three-leaf Sumac (*Rhus trilobata*)

- Low, dense growth
- Ornamental fruit



Instead of Bumald Spirea...

Spiraea x bumalda



Apache Plume (*Fallugia paradoxa*)

- Long bloom time – a paradox
- Dense branching – pruning
- Contrasting foliage color



Instead of Forsythia...

Forsythia x intermedia



Golden Current (*Ribes aureum*)

- Early yellow blooms
- Clove scent
- Upright
- Fruit



Instead of Butterfly Bush...

Buddleja davidii



Fernbush (*Chamaebatiaria millefolium*)

- Summer blooms
- Pollinators



Instead of Boxwood...

Buxus sp.



Smith's buckthorn (*Rhamnus smithii*)

- Glossy semi-evergreen foliage
- Good for wildlife



Instead of a Shrub Rose...

Rosa sp.



Stansbury's cliffrose (*Cowania stansburiana*)

- BLOOMS! Feathery seedheads
- Lobed foliage
- Sun



Instead of a Shrub Rose...

Rosa sp.



Boulder Raspberry (*Rubus deliciosus*)

- Fleshy white blooms
- Part shade
- Thornless
- Red stems



Instead of Blue Mist Spirea...

Caryopteris x clandonensis



Desert 4 O'Clock (*Mirabilis multiflora*)

- Ethereal purple summer blooms
- Silvery mounding foliage



Instead of Burning Bush...

Euonymus alatus



Red-osier dogwood (*Cornus sericea*)

- Brilliant red stems in winter
- White flowers and fruit



Instead of Columnar Buckthorn...

Rhamnus frangula
'Columnaris'



Rocky Mountain Maple (*Acer glabrum*)

- Red buds/stems
- Ornamental fruit
- Shade



Perennials



Instead of Periwinkle...

Vinca minor



Roundleaf Snowberry (*Symphoricarpos rotundifolius*)

- Ideal for slopes
- Low growing
- Fruit
- Shade



Instead of Tickseed...

Coreopsis verticillata



Chocolate Flower (*Berlandiera lyrata*)

- Yellow daisy flowers all season
- Chocolate fragrance
- Extremely drought tolerant



Instead of Chives...

Allium schoenoprasum



Wild Blue Flax (*Linum lewisii*)

- Slender stems
- Abundant blooms



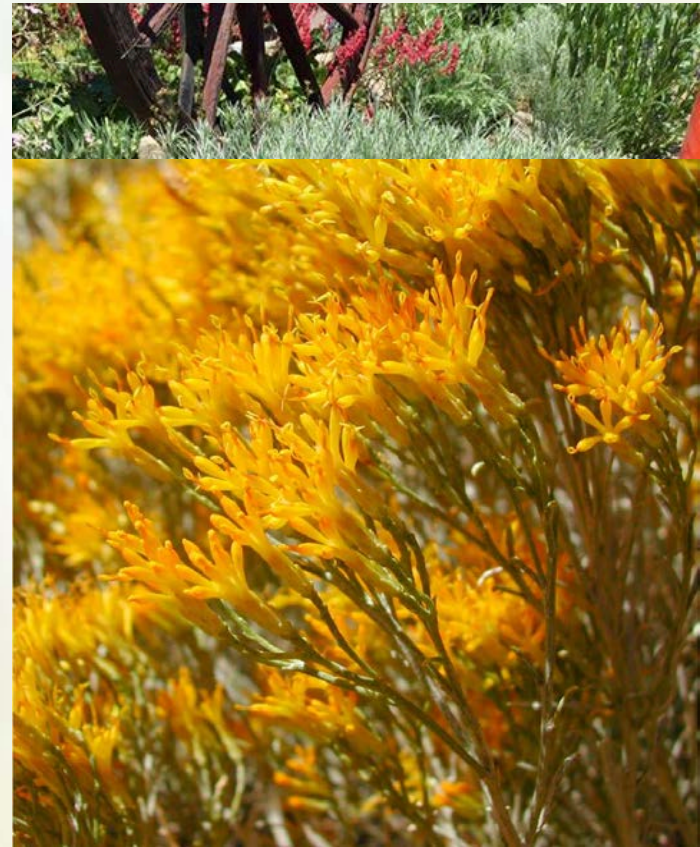
Instead of Chrysanthemums...

Chrysanthemum morifolium



Baby Blue Rabbitbrush
(*Chrysothamnus* [*Ericameria*] *nauseosus*
var. *nauseosus* 'Baby Blue')

- Fall bloom
- Mounding
- Pollinators
- Silvery



Instead of Silvermound...

Artemisia schmidtiana



Fringed Sage (*Artemisia frigida*)

- Silvery foliage – year round
- Spreading growth habit
- Bees



Instead of May Night Salvia...

Salvia nemorosa



Front Range Beardtongue
(*Penstemon virens*)

- Upright, tidy, floriferous



Instead of Zinnias...

Zinnia sp.



Blanketflower (*Gaillardia aristata*)

- Mid-late summer bloom
- Yellow/orange/reds
- Bees



Instead of Crocus...

Crocus sp.



Pasque Flower (*Pulsatilla patens*)

- Early spring lavender blooms
- Ornamental seedhead



Instead of Oregano...

Origanum vulgare



Beebalm (*Monarda fistulosa*)

- Fragrant foliage and flowers
- Pollinators



Instead of Delphinium...

Delphinium grandiflorum



Rocky Mountain Penstemon
(*Penstemon strictus*)

- Does not lodge
- Upright
- Floriferous
- Pollinators



Instead of Garden Phlox...

Phlox paniculata



Rocky Mountain Beeplant (*Cleome serrulata*)

- Globe shaped purple flowers
- Annual
- Bees



Instead of a Daylily...

Hemerocallis hybrids



Desert Princessplume (*Stanleya pinnata*)

- Extremely drought tolerant
- Does best in alkaline soils



Grasses



Instead of Blue Avena Grass...

*Helictotrichon
sempervirens*



Yucca (Yucca glauca)

- Blue/silver foliage
- Winter interest
- Shrub



Instead of Miscanthus...

Miscanthus sinensis



Indian grass (*Sorghastrum nutans*)

- Upright
- Seedhead



Photo Courtesy of the Forest Preserve District of DuPage County

Instead of Karl Foerster...

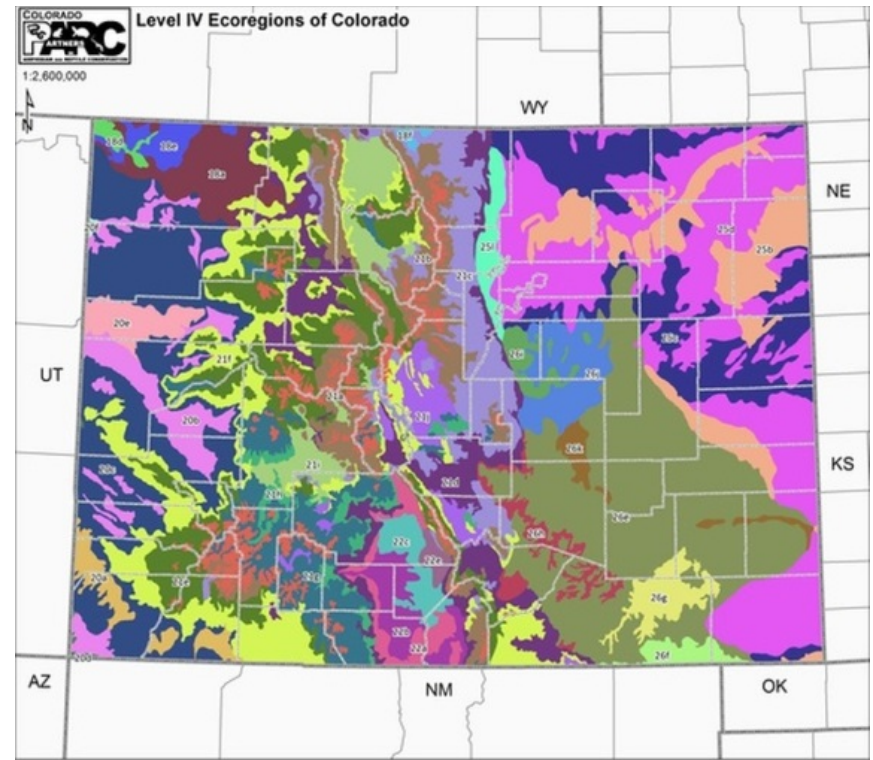
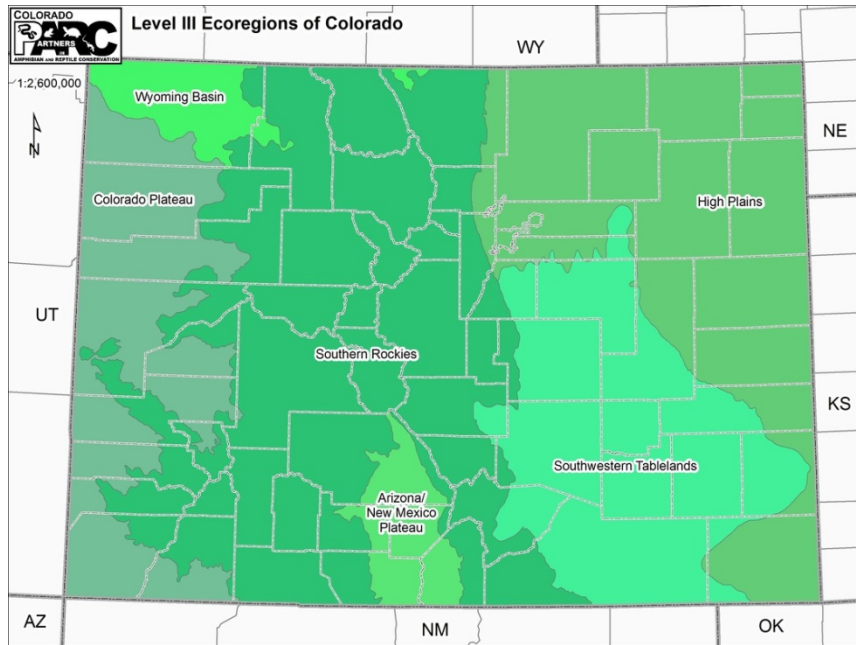
Calamagrostis x acutiflora



Little Bluestem (*Schizachyrium scoparium*)

- Fall color
- Upright
- Wildlife





Ecoregion Level IV

- | | |
|---|---|
| 18a Rolling Sagebrush Steppe | 21i Sagebrush Parks |
| 18d Foothill Shrublands and Low Mountains | 21j Grassland Parks |
| 18e Salt Desert Shrub Basins | 22a San Luis Shrublands and Hills |
| 18f Laramie Basin | 22b San Luis Alluvial Flats and Wetlands |
| 20a Monticello-Cortez Uplands | 22c Salt Flats |
| 20b Shale Deserts and Sedimentary Basins | 22e Sand Dunes and Sand Sheets |
| 20c Semiarid Benchlands and Canyonlands | 25b Rolling Sand Plains |
| 20d Arid Canyonlands | 25c Moderate Relief Plains |
| 20e Escarpments | 25d Flat to Rolling Plains |
| 20f Uinta Basin Floor | 25i Front Range Fans |
| 21a Alpine Zone | 26e Piedmont Plains and Tablelands |
| 21b Crystalline Subalpine Forests | 26f Mesa de Maya/Black Mesa |
| 21c Crystalline Mid-Elevation Forests | 26g Purgatoire Hills and Canyons |
| 21d Foothill Shrublands | 26h Pinyon-Juniper Woodlands and Savannas |
| 21e Sedimentary Subalpine Forests | 26i Pine-Oak Woodlands |
| 21f Sedimentary Mid-Elevation Forests | 26j Foothill Grasslands |
| 21g Volcanic Subalpine Forests | 26k Sandsheets |
| 21h Volcanic Mid-Elevation Forests | |

- Landscapes are Part of a Larger Eco-Region
- Eco-regions denote areas with general similarities

Native Plant Resources

- CoNPS.org
 - Native plant vendor list
 - Virtual Plant Sale
- Native plant pictures: SEINet
 - Jack & Martha Carter and friends
- Non-native plant pictures: Wikipedia
 - Colorado State University



Thank you!

Deryn Davidson
CSU Extension

ddavidson@bouldercounty.org

303-678-6386